

Turkey River WMA Meeting 12/04/2014

For additional information:

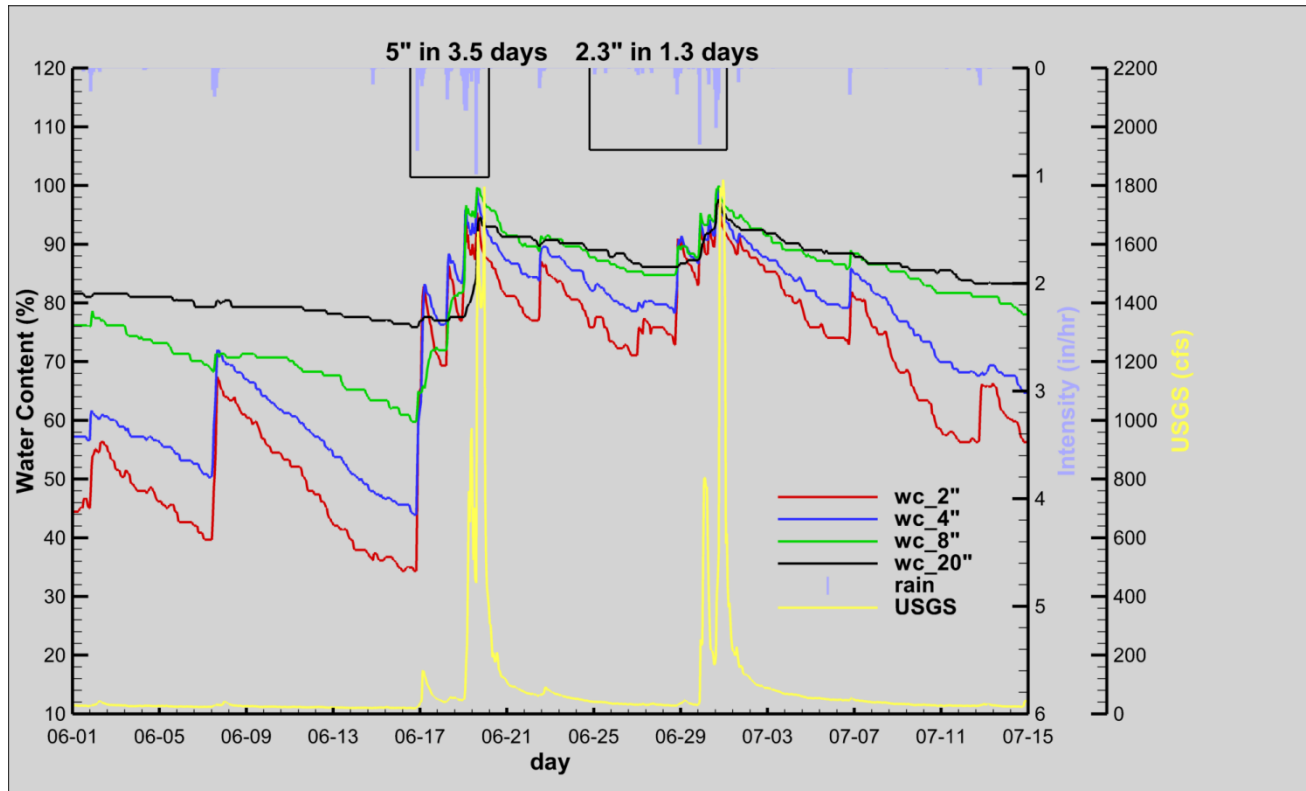
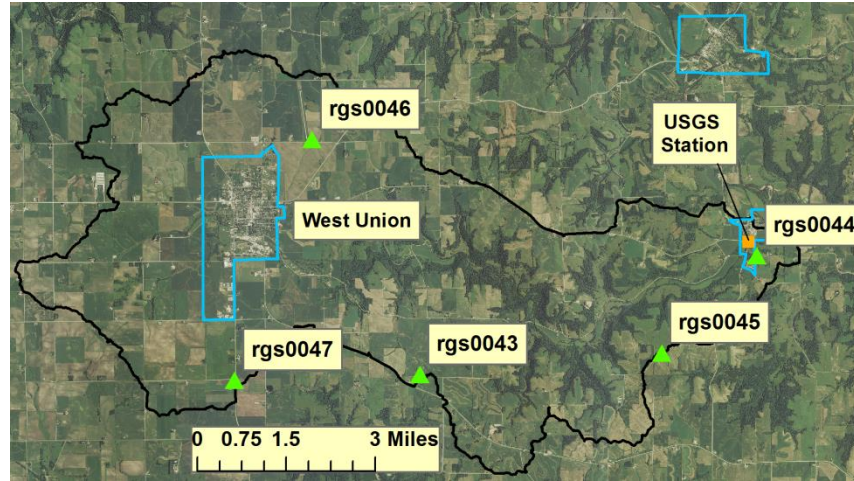
Larry Weber, larry-weber@uiowa.edu

Antonio Arenas, antonio-arenasamado@uiowa.edu

Sara Steussy, sara-steussy@uiowa.edu

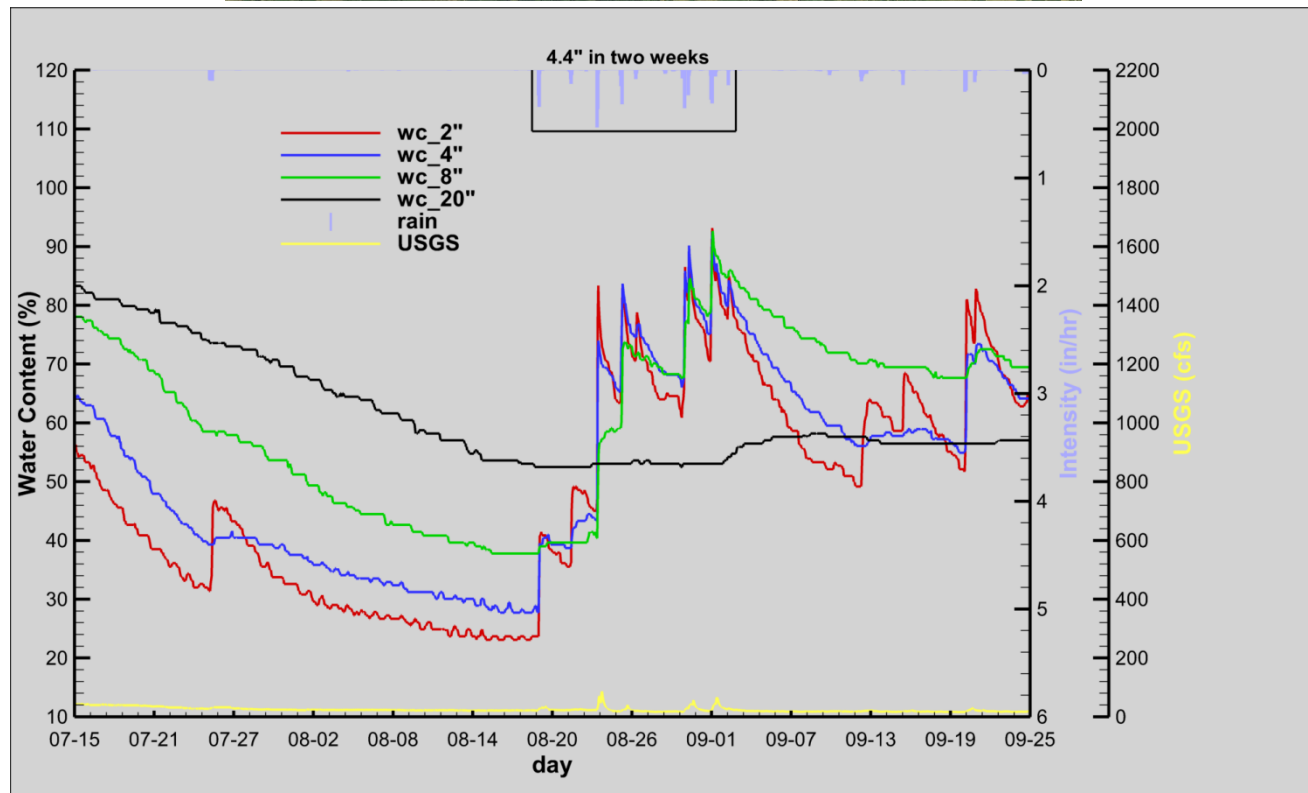
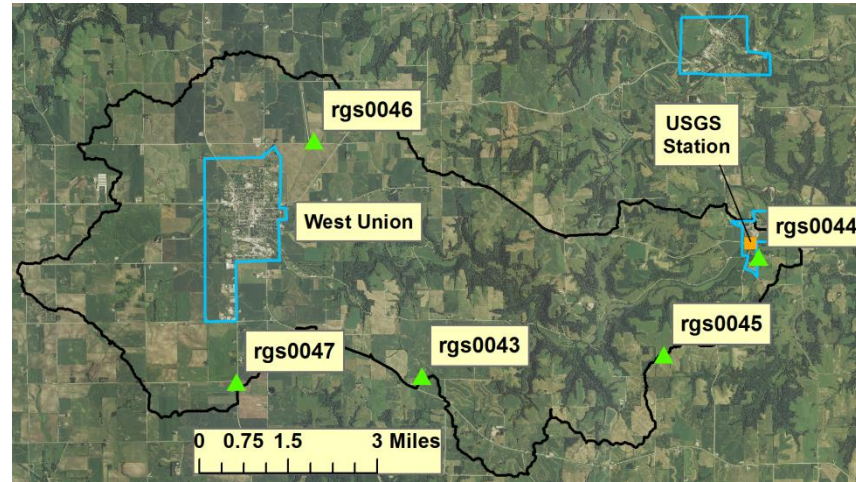
Soil Moisture / Rain / Discharge

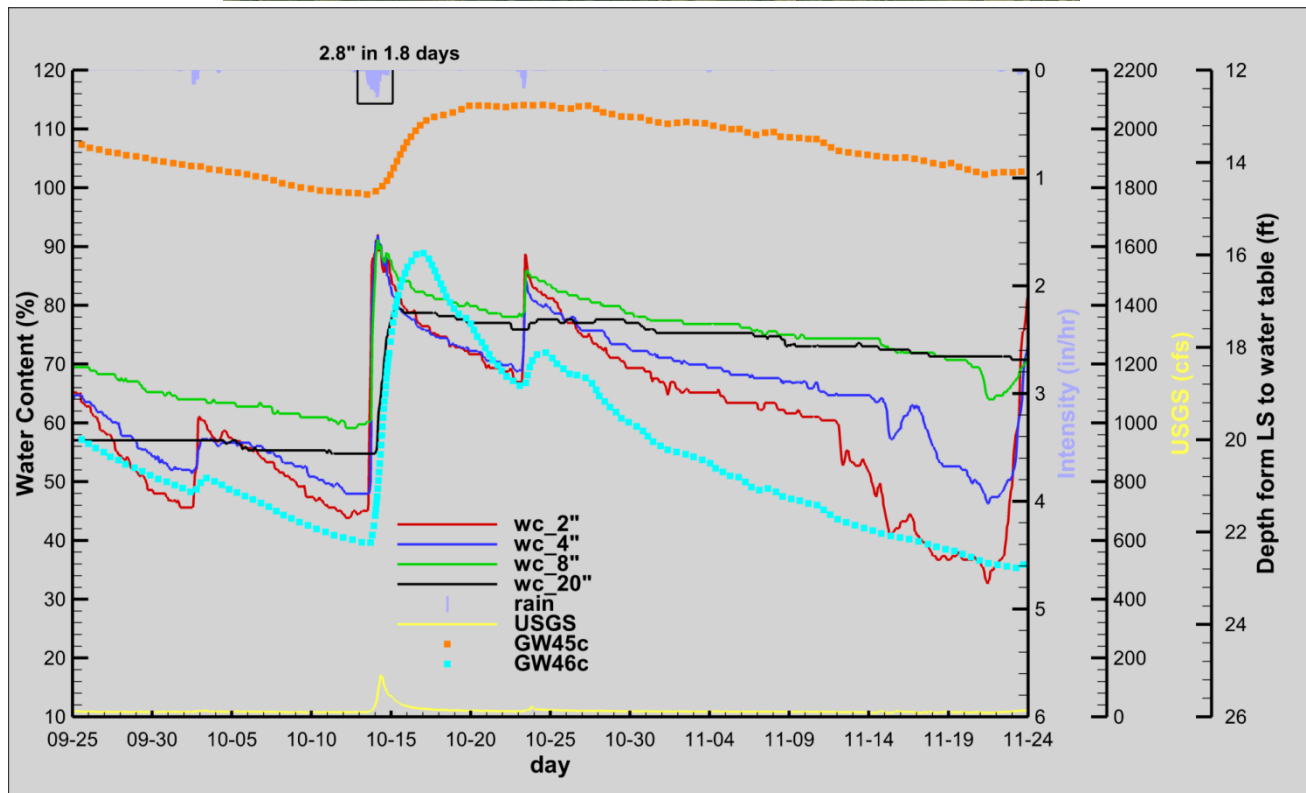
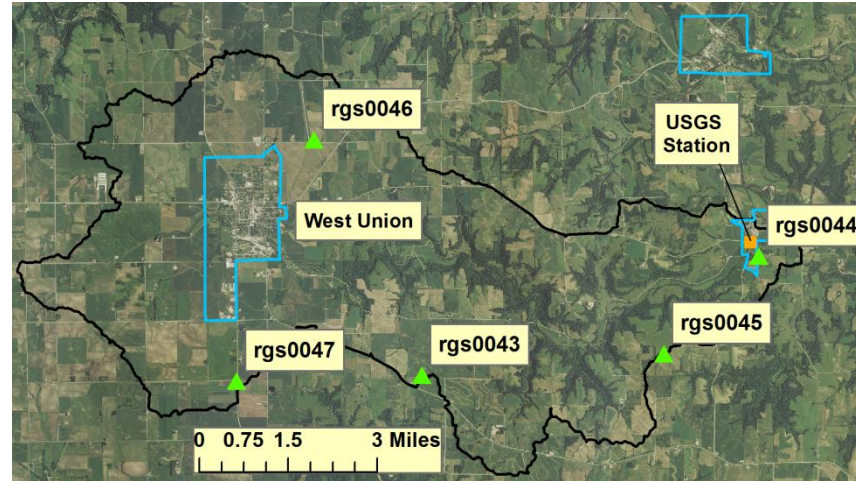
June 1 – July 15, 2014



Soil Moisture / Rain / Discharge

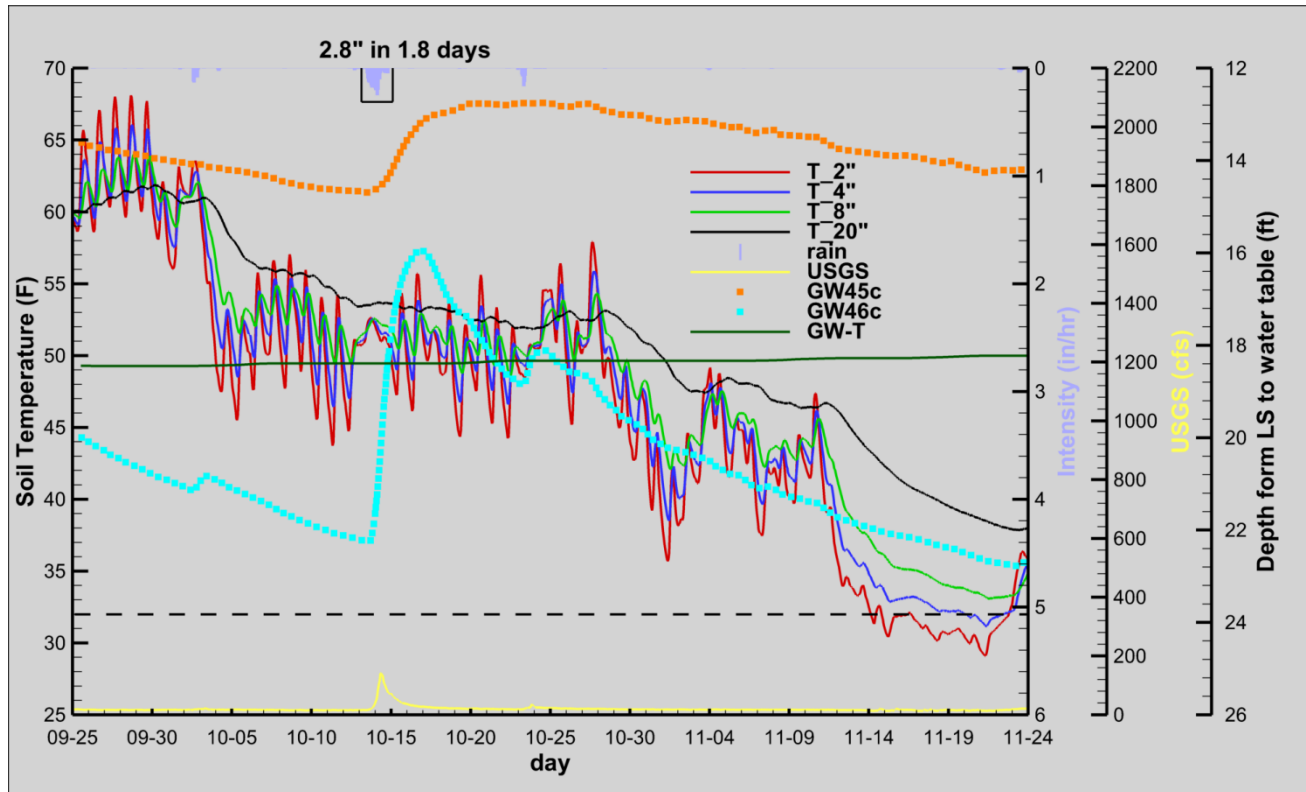
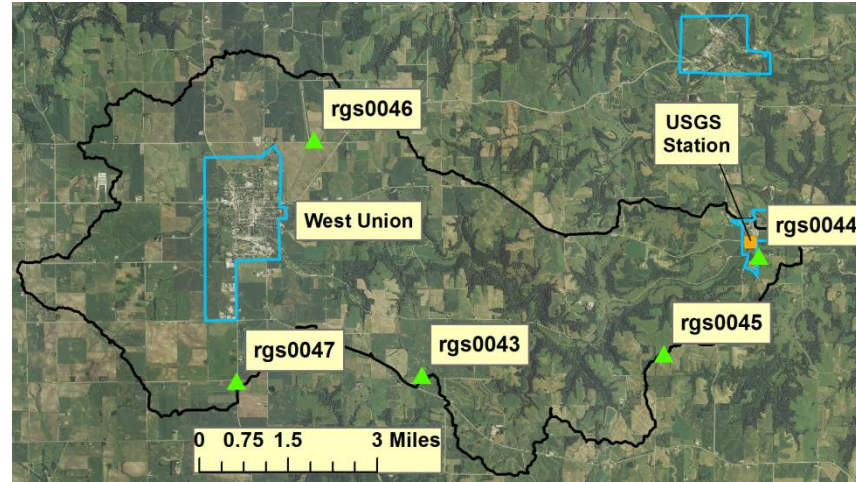
July 16 – Sept 25, 2014



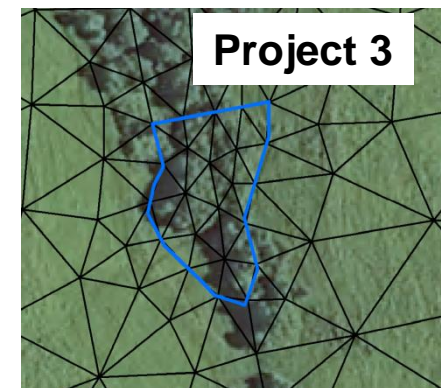
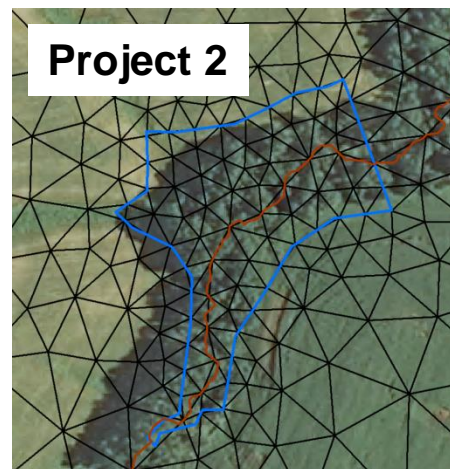
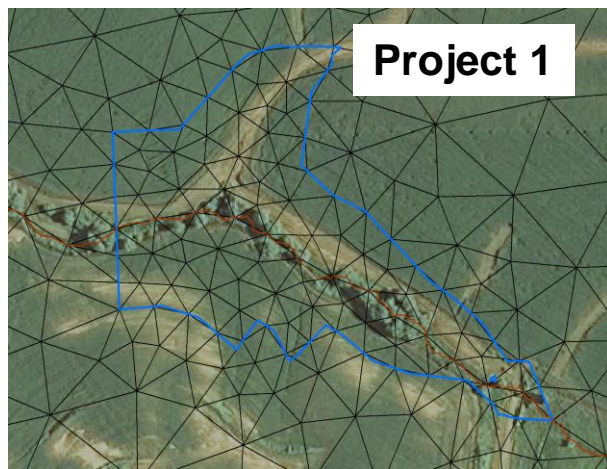
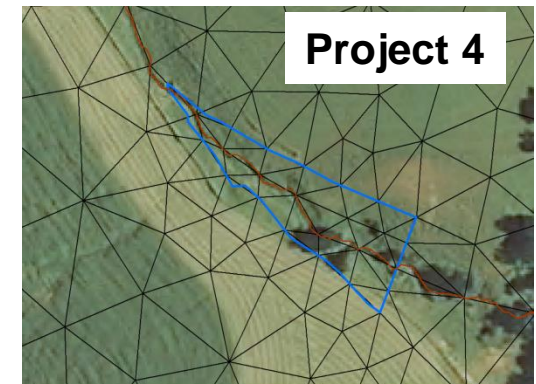
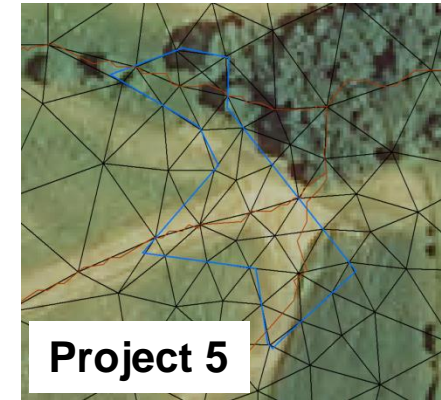
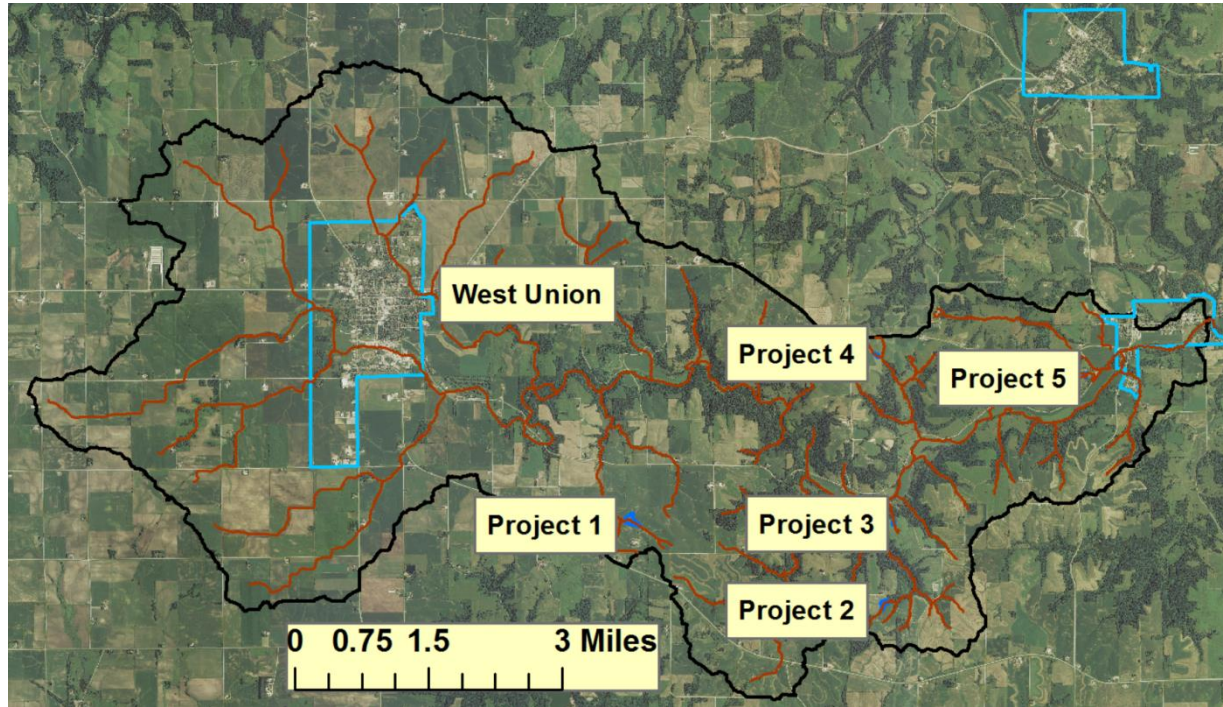


Soil Moisture / Rain / Discharge / GW-temp

Sept 26 – Nov 24, 2014

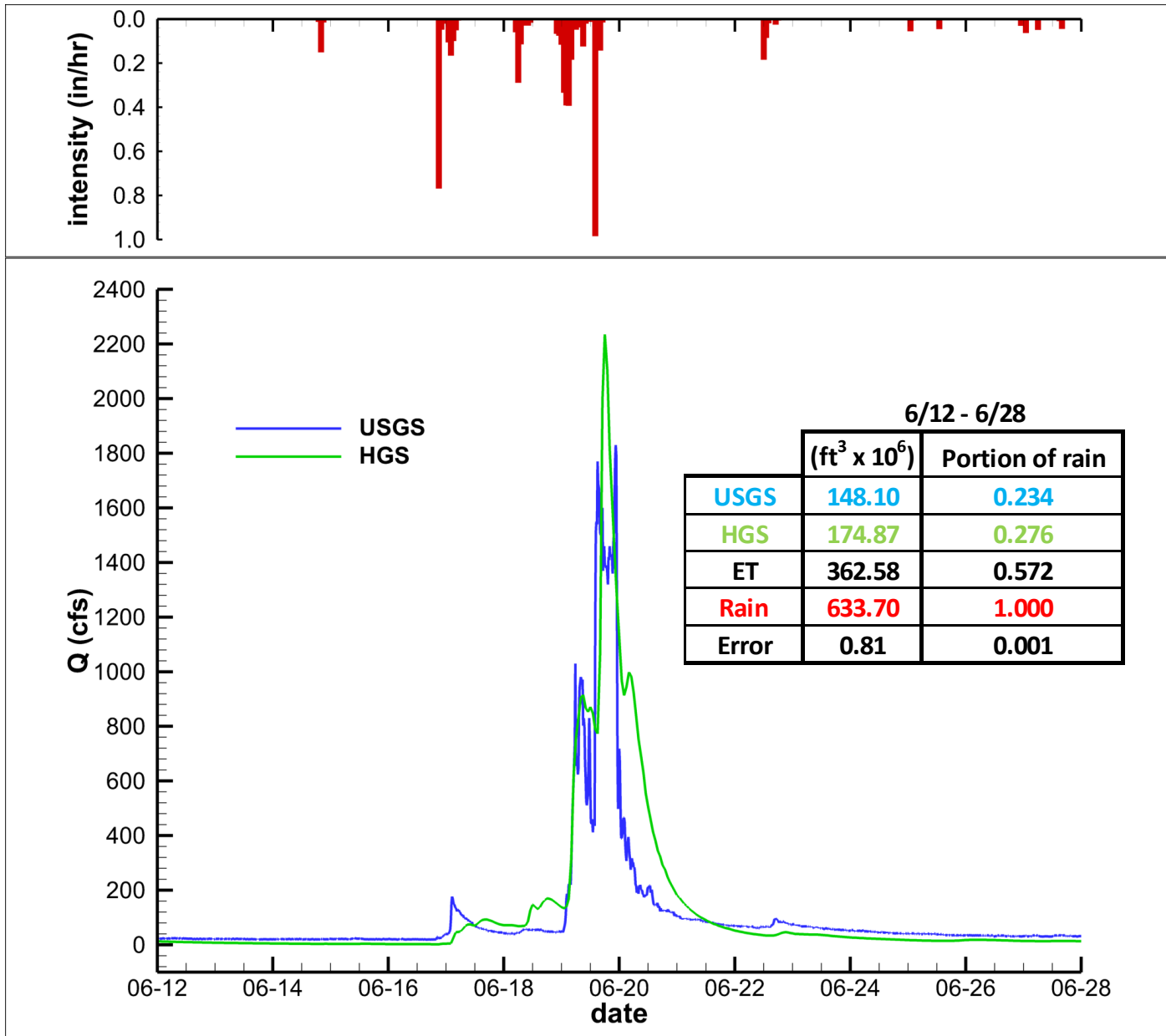


Projects - Final Designs - Mesh



June 2014/without projects

Streamflow at Otter Creek outlet



June 2014/without projects

Soil moisture time series in Otter Creek

