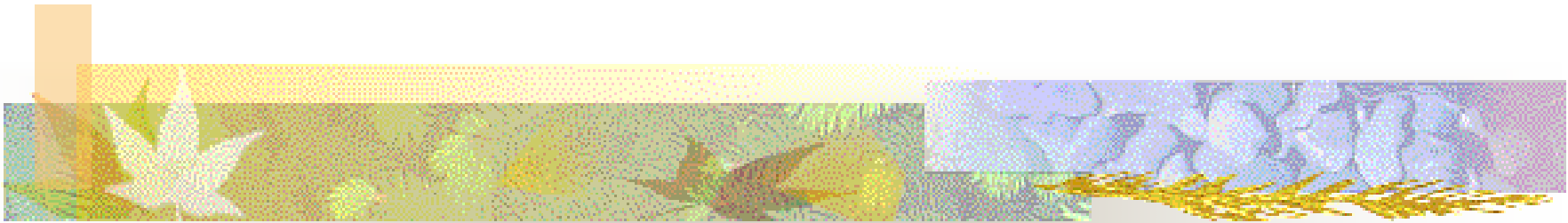


GREEN PILOT PROJECT



City of West Union, Iowa



What is a Green Pilot Community?

- A partnership with Iowa Economic Development Authority
- Sustainable Community Design
- Creating best practices & a model to follow
- Technical assistance, training & financial incentives
- Increased economic activity
- Federal, State, & Local agency involvement

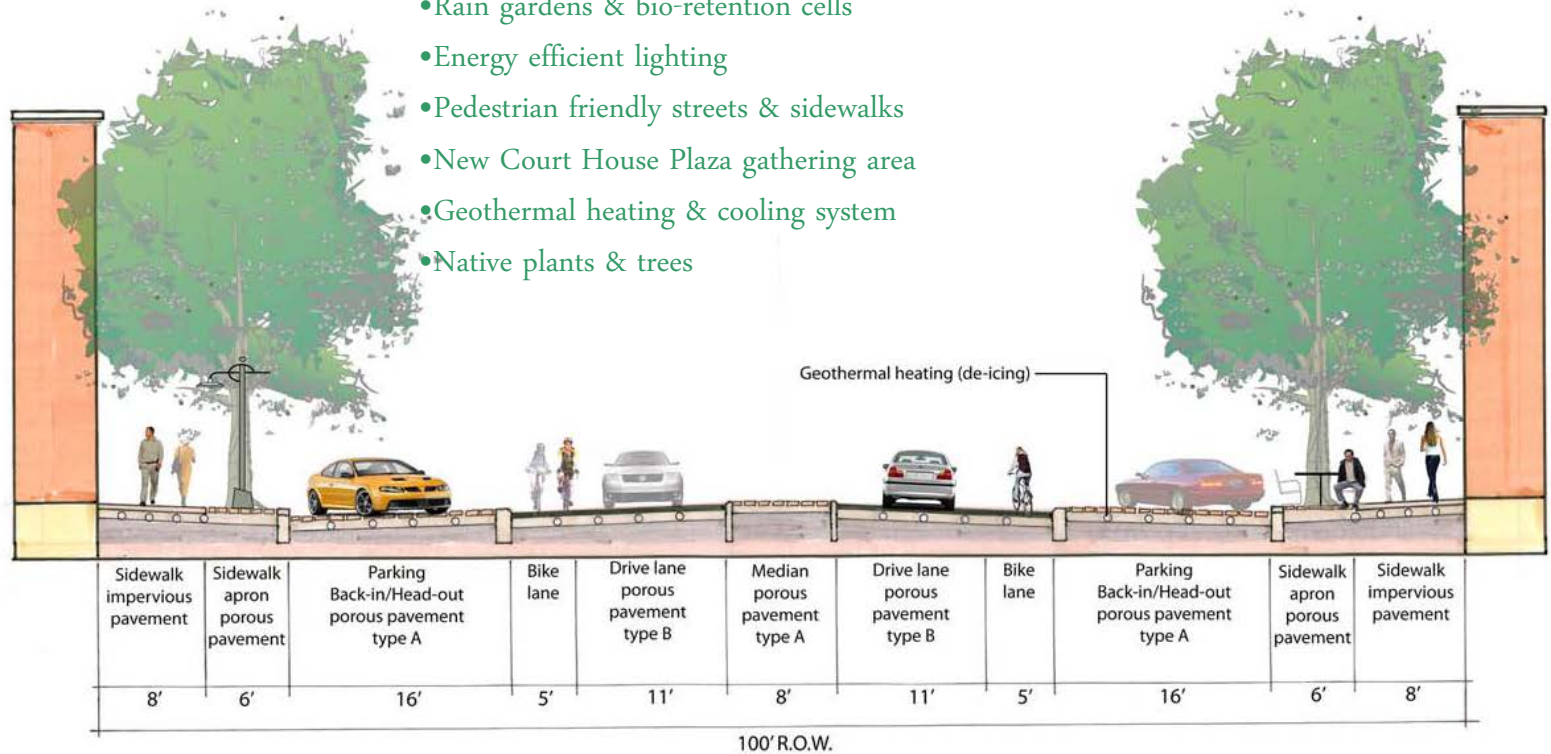


West Union, Iowa

Creating a sustainable, green model community . . .

A new green streetscape planned for completion in 2012 incorporating

- Permeable pavement system
- Rain gardens & bio-retention cells
- Energy efficient lighting
- Pedestrian friendly streets & sidewalks
- New Court House Plaza gathering area
- Geothermal heating & cooling system
- Native plants & trees



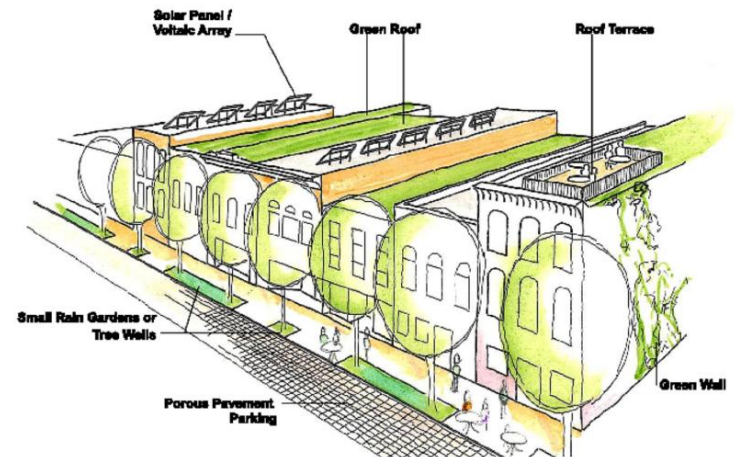


Our Guiding Principles for the future . . .

- Create great public & private spaces that serve the community and attract new residents and businesses
- Invest in energy efficient structures & systems with a greater reliance on renewable energy sources
- Integrated planning & design
- Make all infrastructure and amenities both functional and beautiful
- Incorporate a healthy, natural environment
- Cultivate local enterprise, art, & craftsmanship to support & enhance the economy of Northeast Iowa
- Reinforce West Union's character & sense of place through the creation of unique gathering places

Green Building Practices

- Permeable pavement system
- Green roofs
- Shared geothermal heating system
- Rain gardens
- Bio-retention cells
- Energy efficient lighting



Green Roof Project

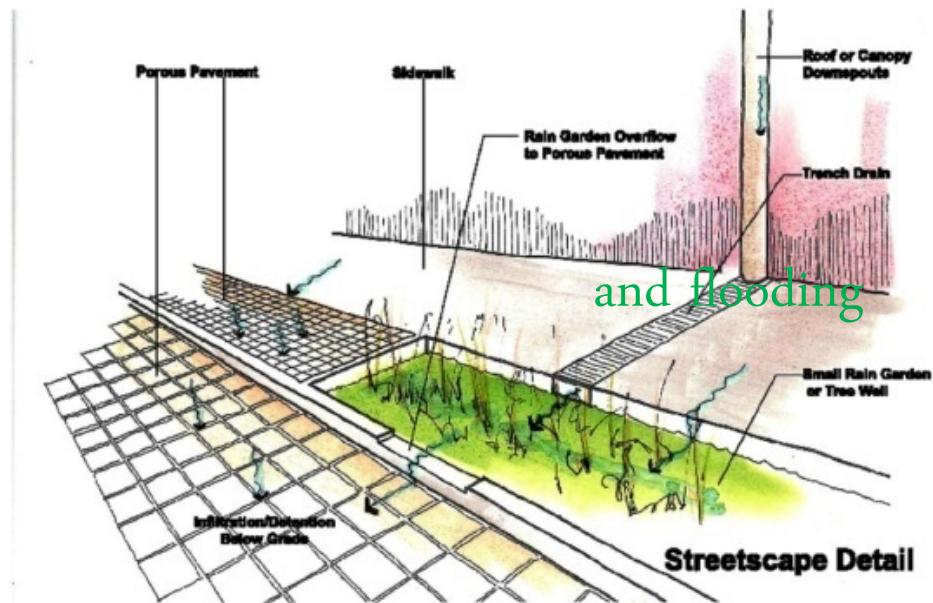


West Union Chamber of Commerce building



Storm Water Management

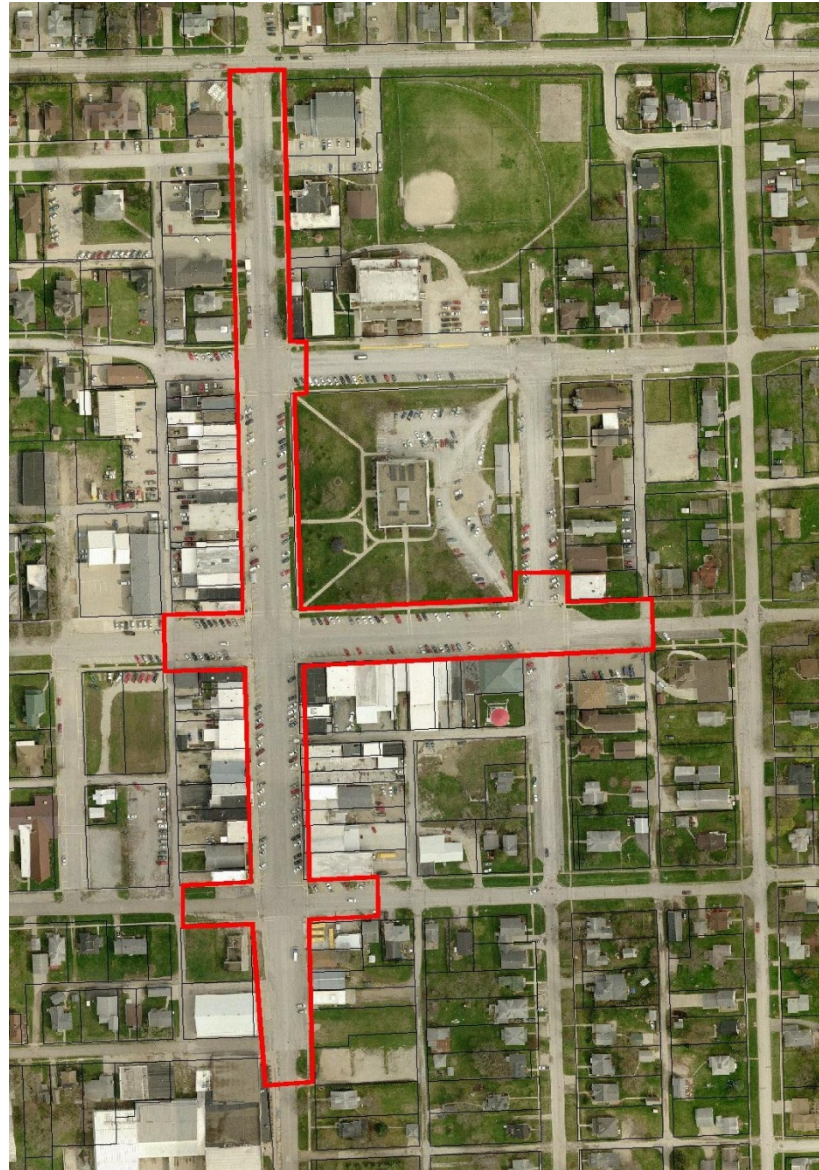
- Treat water as a resource
- Retain water on site (90% is the goal)
- Protect local trout streams
- Cleanse & cool water
- Integrated system
- Reduce surface run-off



Public Outreach & Education



Project Area – Downtown West Union



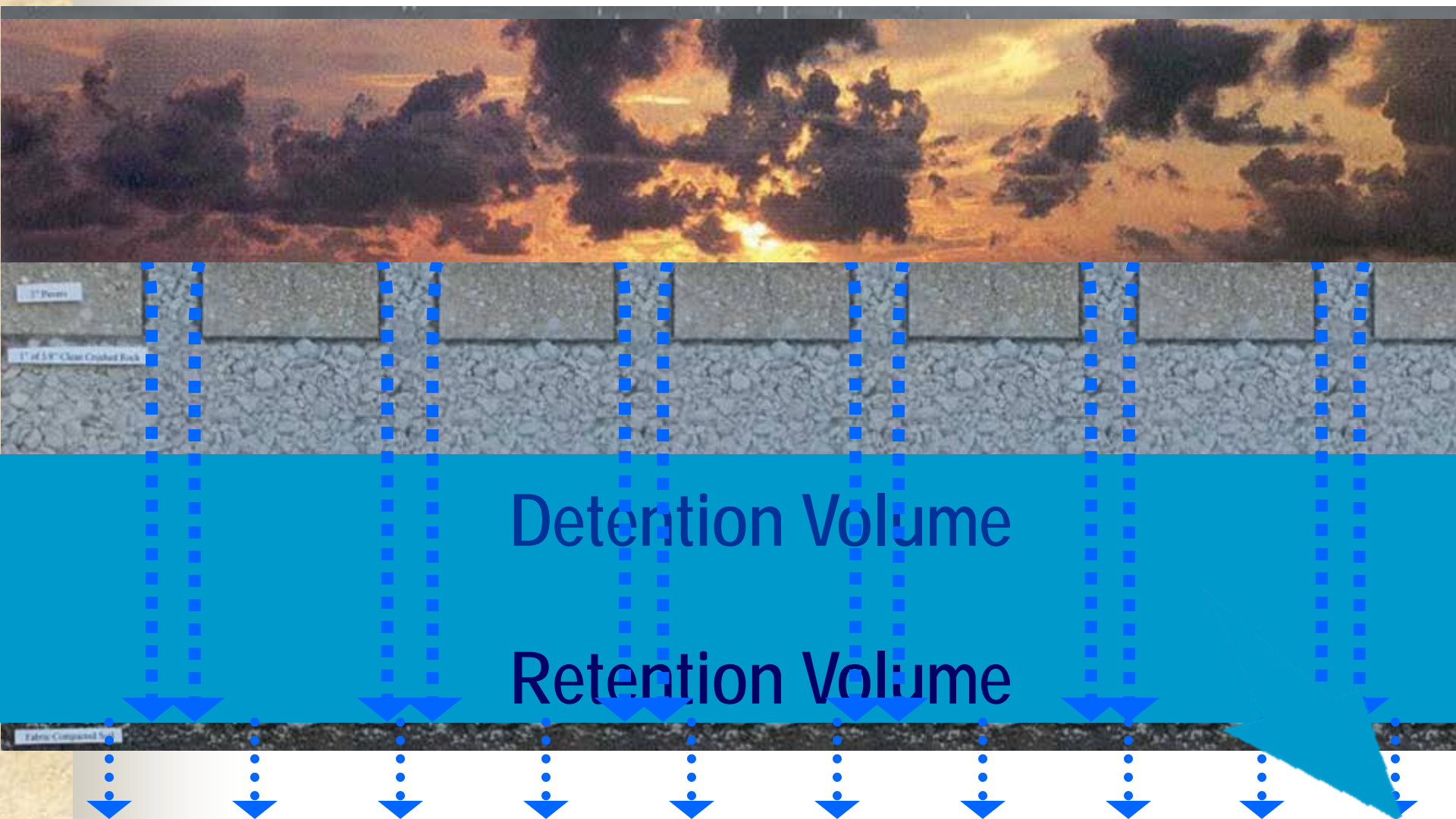
Permeable Pavement Systems

- Reduce surface water runoff
- Promotes infiltration
- Enhances water quality by cooling and cleansing



Permeable Pavement:

Infiltration (Retention) and Detention Capacity



Construction Photos





Project Funding Sources:

IDOT RISE fund		\$2,327,034	streets, sidewalks, lighting
Community Development Block Grant	\$1,000,000		geothermal system
I-Jobs Dedicated Funding (state)	\$1,175,000		streets, sidewalks, eng.
Department of Energy		\$1,000,000	geothermal, grant fund
Environmental Protection Agency		\$500,000	geothermal system
IDALS I-Jobs	\$500,000		porous pavers
IDNR I-Jobs	\$100,000		bio-retention cells
WIRB (Water Improvement Review Board)	\$500,000		porous pavers
Main Street Challenge Grant	\$100,000		geothermal system
Main Street I-Jobs		\$440,000	Civic Plaza, amenities
City of West Union GO Bond	\$2,665,000		anything
Fayette County	\$10,000		anything
Main Street West Union Program		\$11,000	amenities

The Finished Product





For More Information, Contact:

Robin Bostrom

Main Street West Union

101 North Vine Street

West Union, Iowa

ph. 563 422 3070

email: mainstreetwu@gmail.com