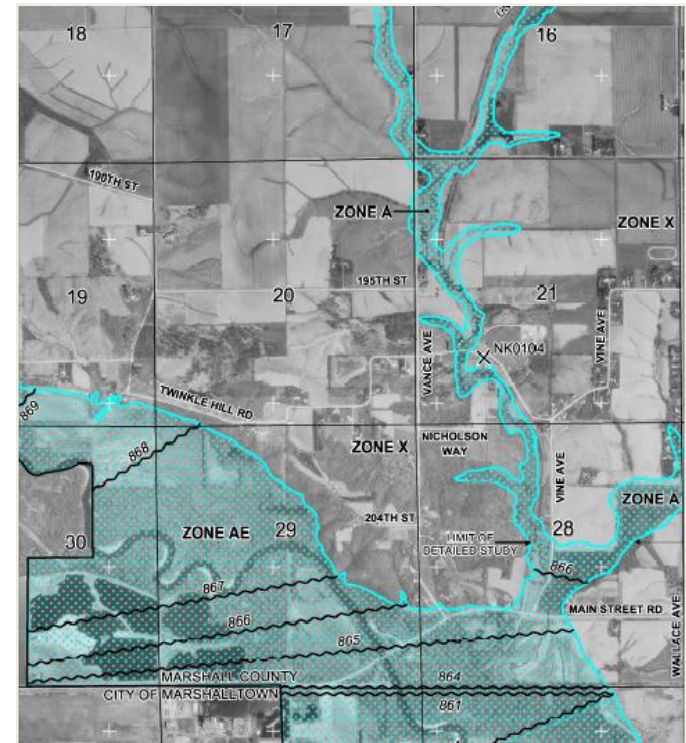


IOWA STATEWIDE FLOODPLAIN MAPPING PROGRAM

*Turkey River Basin Flood Seminar
June 14, 2012*

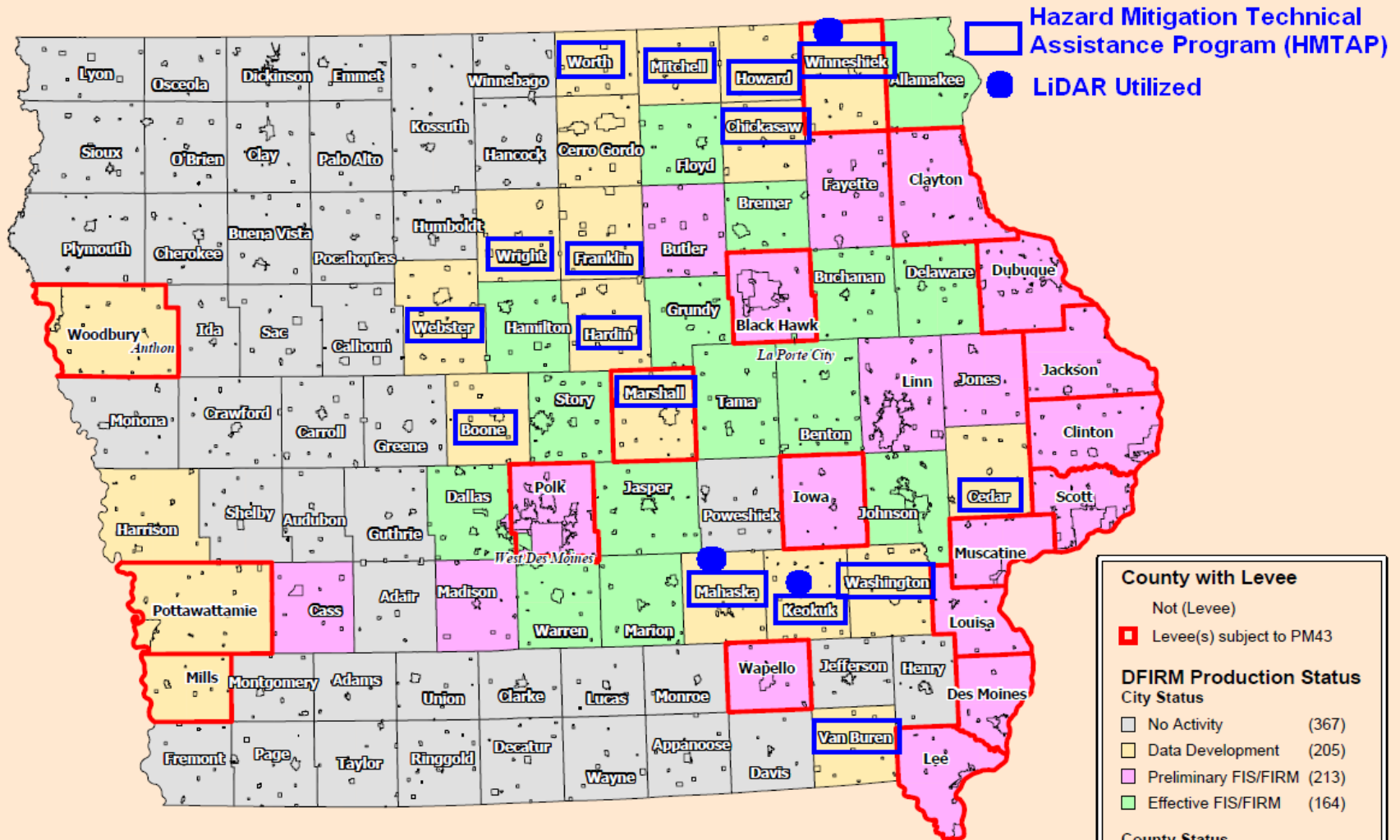


Scott Ralston, P.E., CFM
Christopher Kahle, GIS Specialist

Topics To Be Covered

- Iowa's Current Floodplain Mapping Status
- Iowa's Floodplain Mapping Program

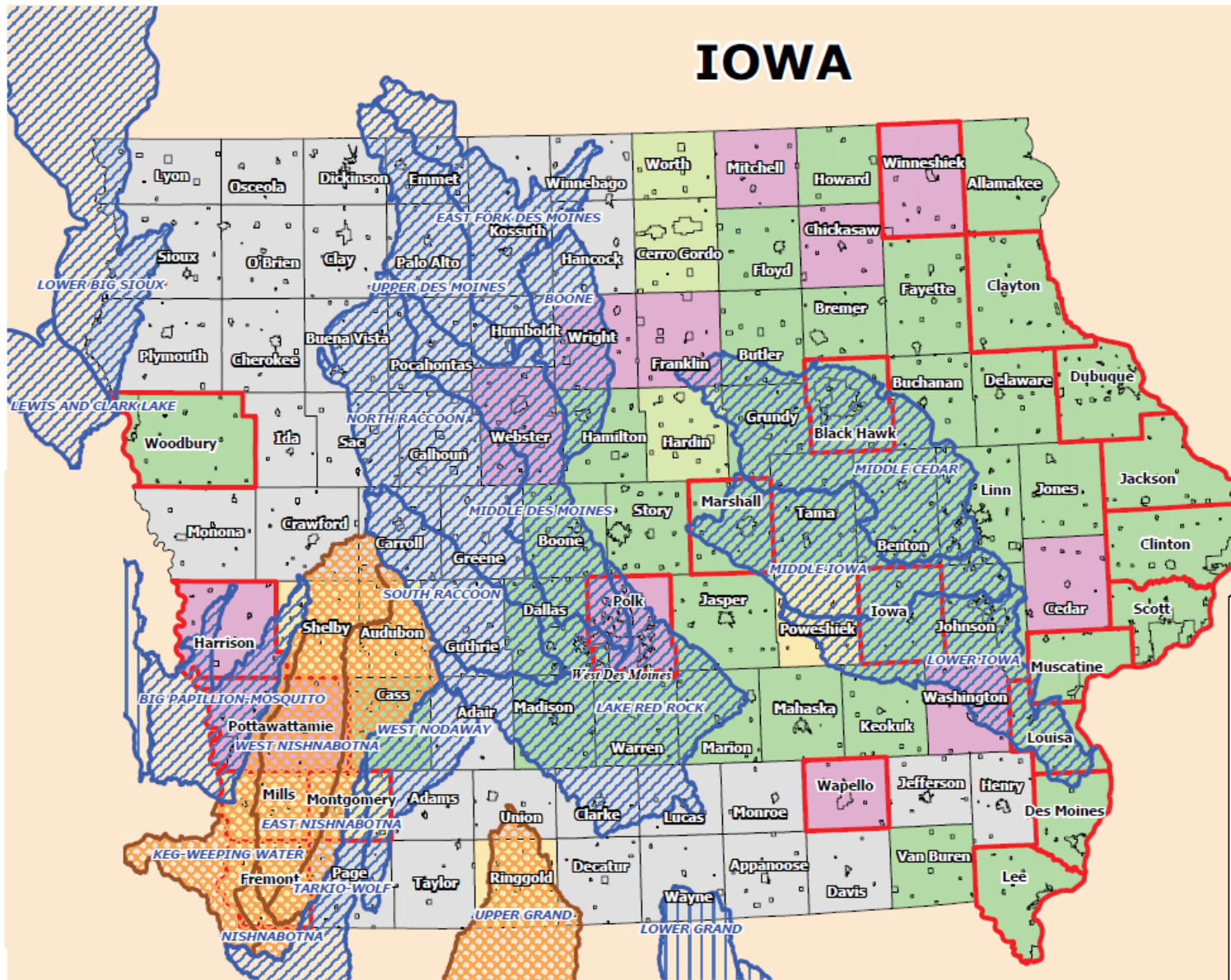
December 2009: IOWA - FLOODPLAIN MAP STATUS



U.S. Dept. of Homeland Security
 FEMA - Region VII
 MapMod all states status.wor
 December 1, 2009

No Activity - FEMA does not have a DFIRM planned for the county/community.
 Sooping - FEMA is developing a Statement of Work to fund a project in the current fiscal year.
 Data Development - FEMA has contracted for approximate and detailed analysis, redelineation and digital conversion (where needed), and DFIRM production.
 Preliminary FIS/DFIRM - A preliminary FIS/DFIRM is available for community and public comment. May be in 90-day appeal or 6-month compliance period.
 Effective FIS/DFIRM - FIS and DFIRM are effective and available from Map Service Center.
 Levee Note - Per procedure memo 34 and 43, the level of protection of accredited levees is required to be verified before a new FIRM may be released. In some cases, a community and levee owner will be allowed a 24 month period to provide certification documents.

IOWA



Watershed Project

- Discovery
- Discovery & Topo Data
- Topographic Data
- Data Development

County with Levee

- Levee(s) subject to PM43 (21)

County wide Projects

City Status

- No Activity (319)
- Data Development (55)
- Preliminary FIS/FIRM (116)
- Notice of Final Determination (28)
- Effective FIS/FIRM (430)

County Status

- No Activity (38)
- Data Development (7)
- Preliminary FIS/FIRM (12)
- Notice of Final Determination (3)
- Effective FIS/FIRM (39)



U.S. Dept. of Homeland Security
 FEMA - Region VII
 MapMod all states status.wor
 February 10, 2012

No Activity - FEMA does not have a DFIRM planned for the county/community.
 Discovery - FEMA is developing a Statement of Work for a future project.
 Data Development - FEMA has contracted for basic and enhanced analysis, redelineation and digital conversion (where needed), and DFIRM production.
 Preliminary FIS/DFIRM - A preliminary FIS/DFIRM is available for community and public comment.
 Notice of Final Determination - Effective date determined, communities have 6 months to adopt revised FIS/DFIRM.
 Effective FIS/DFIRM - FIS and DFIRM are effective and available from Map Service Center.

Levee Note - Per procedure memo 34 and 43, the level of protection of accredited levees is required to be verified before a new FIRM may be released. In some cases, a community and levee owner will be allowed a 24 month period to provide certification documents.

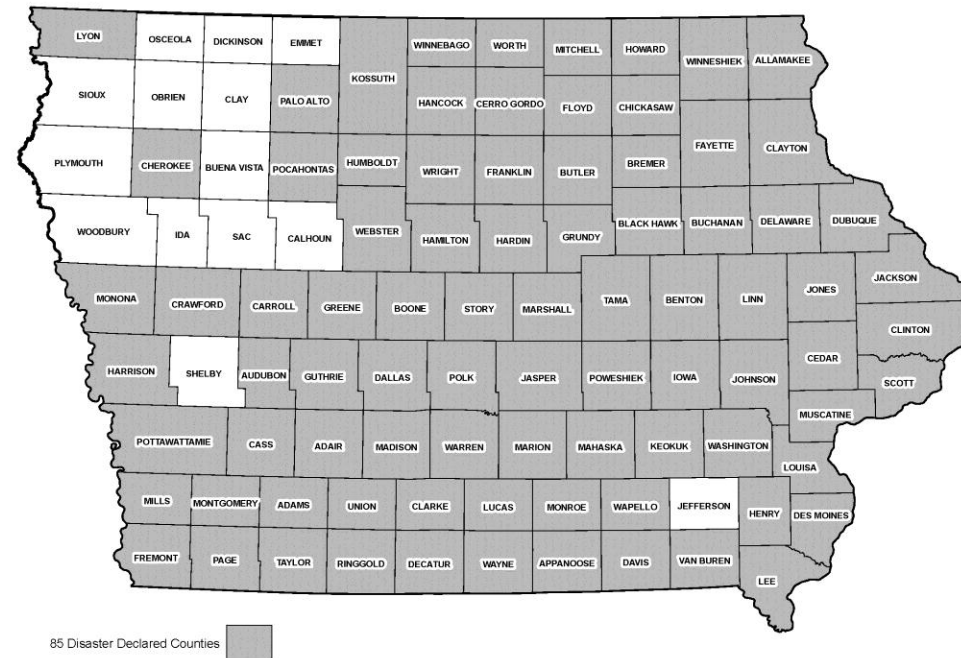
Brief History

- 1993 Floods
 - Major flooding in Midwest
- Statewide LiDAR Project: 2005-2010
 - Floodplain mapping was not primary impetus for project
- 2008 Floods
 - Only 15 years since last widespread flood event (1993)
 - Flood of record in many parts of state
 - Flood risk awareness rose significantly
- State Response
 - Rebuild Iowa Advisory Commission
 - \$640 Million Statewide Disaster Relief CDBG Grant
- Federal and State Mapping Investment
 - \$4.3 Million for LiDAR (State & Federal Agencies)
 - \$15 Million in CDBG Funds (\$150k / County)
 - \$2.2 Million in ACOE Section 22 Planning Assistance to States (PAS) Funding
 - Portion of \$2 Million Floodplain Management (SFY 2010, 2011, 2012)
- Iowa Flood Center (U of I)

Floodplain Mapping Program Background

- \$15M HUD CDBG grant
- Administered by Iowa DED and DNR
- Supports floodplain mapping in the 85 counties declared federal disaster areas
- “...to produce floodplain maps that meet FEMA technical standards and can be published as Digital Flood Insurance Rate Maps (DFIRMs).”

Figure 1 - Federal Disaster Declaration (FEMA-1763-DR)



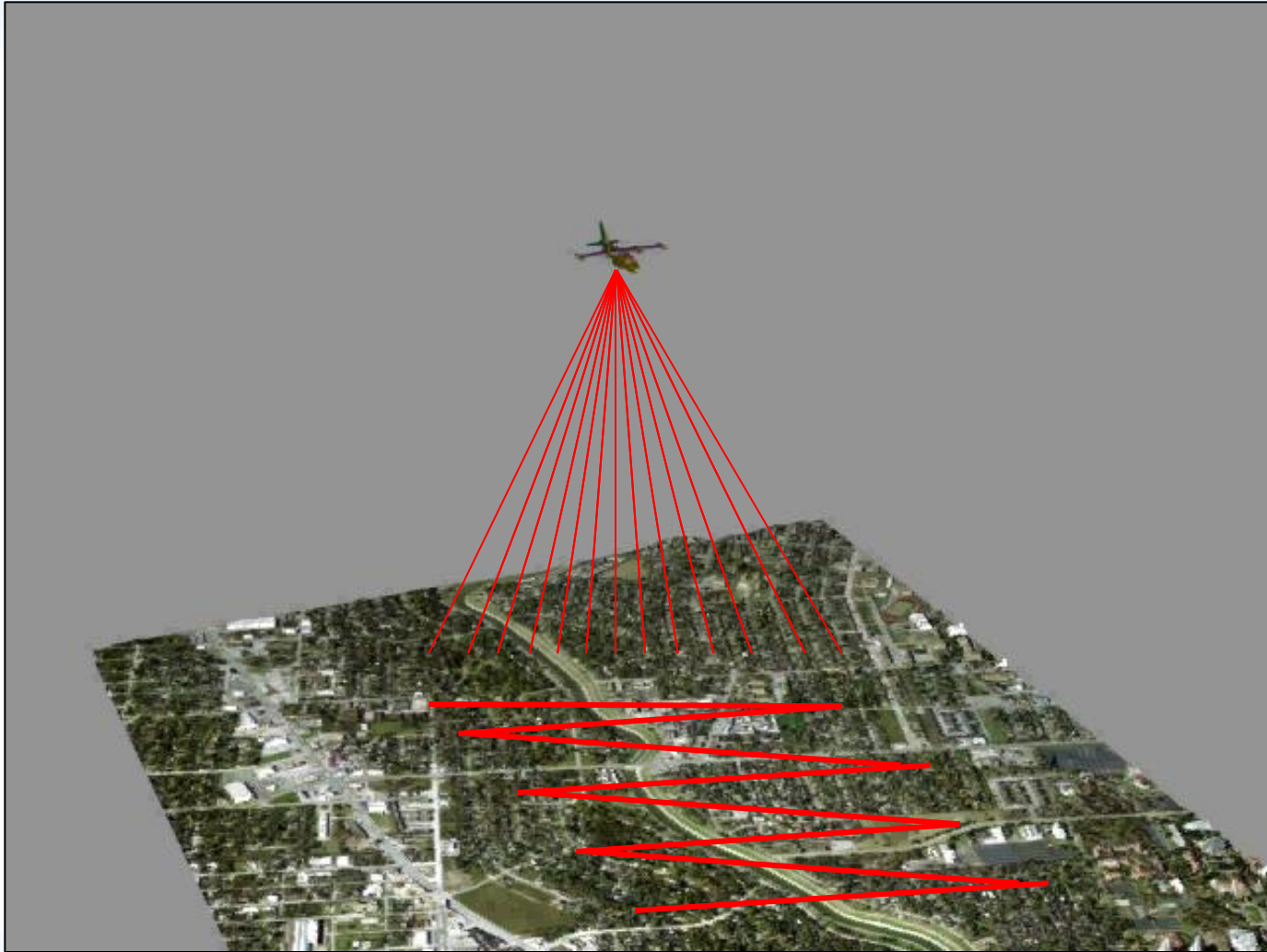
LiDAR Components

Light Detection and Ranging

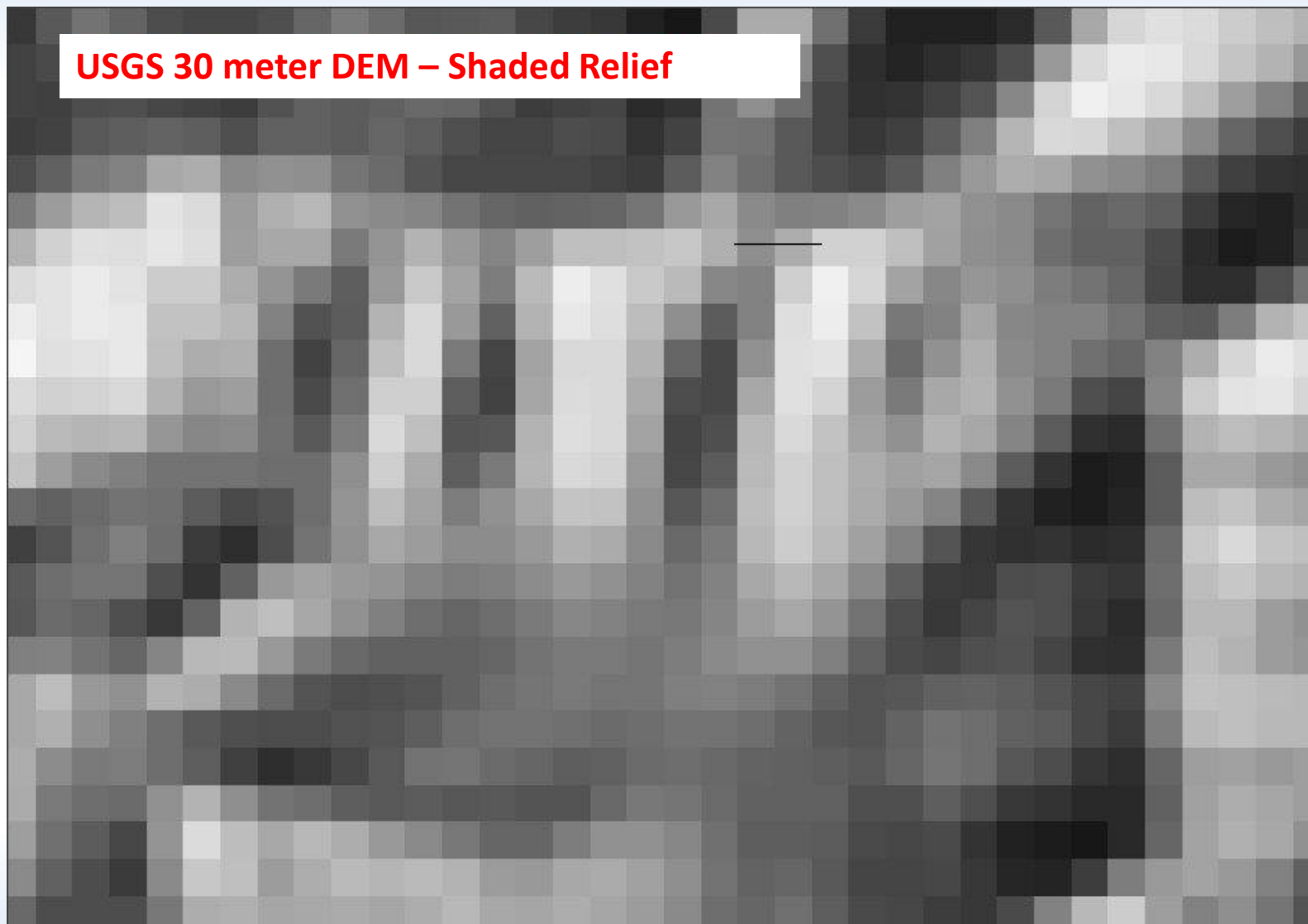
- Laser Rangefinder
- IMU (INS)
- GPS
- On board computer



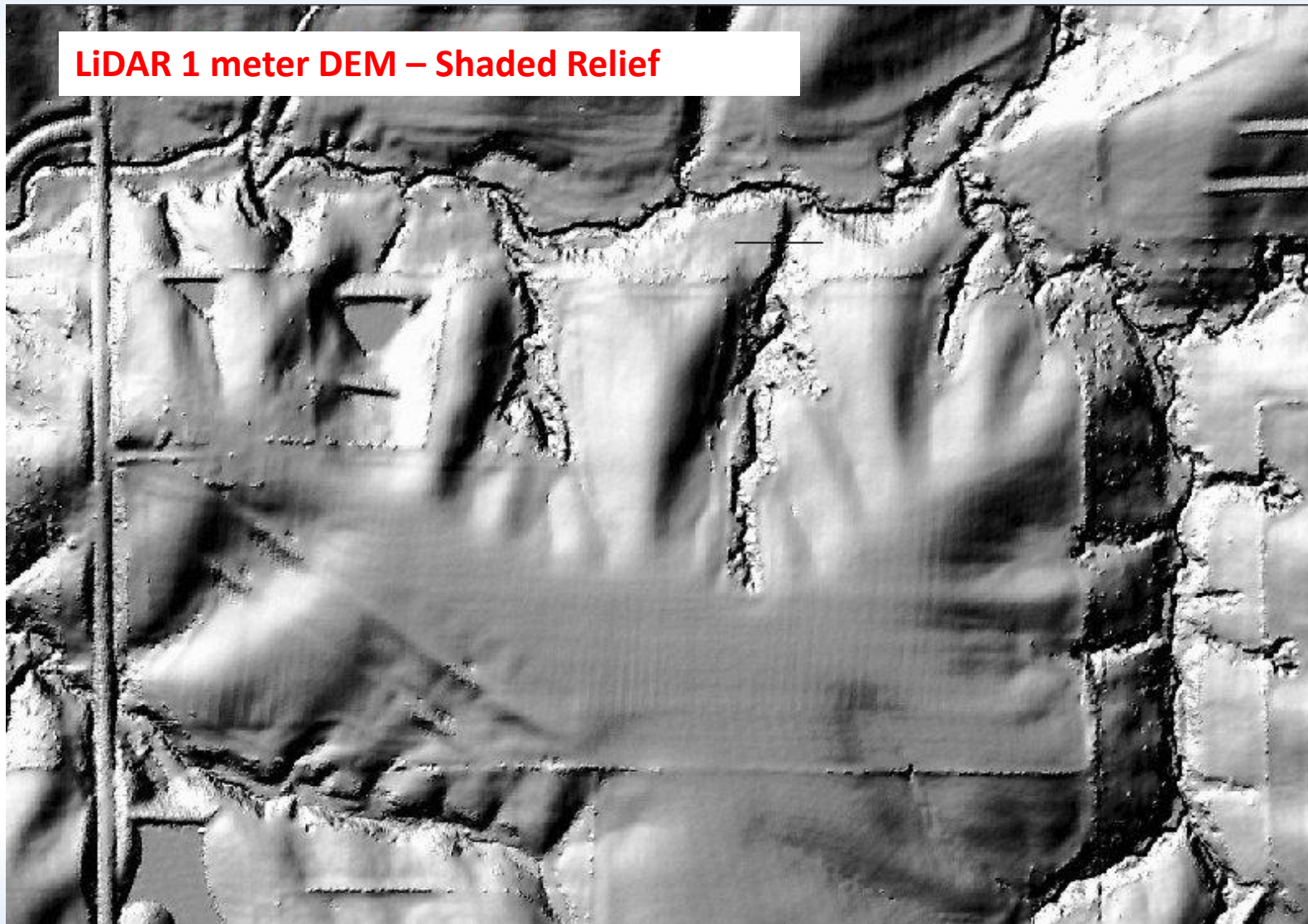
Scanning LiDAR



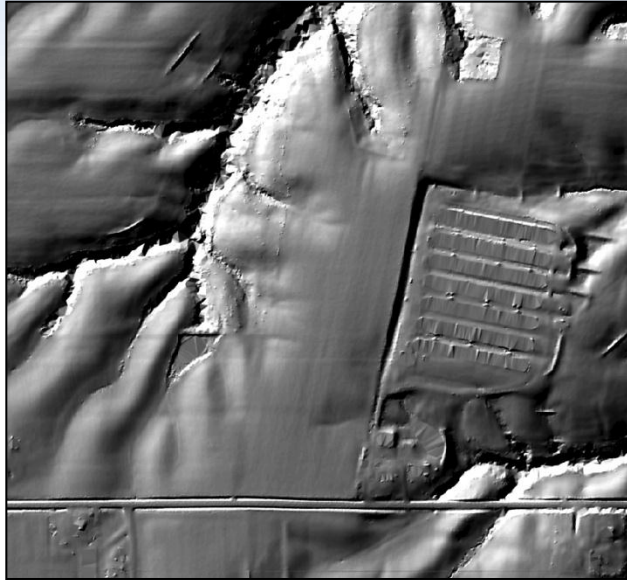
USGS 30 meter DEM – Shaded Relief



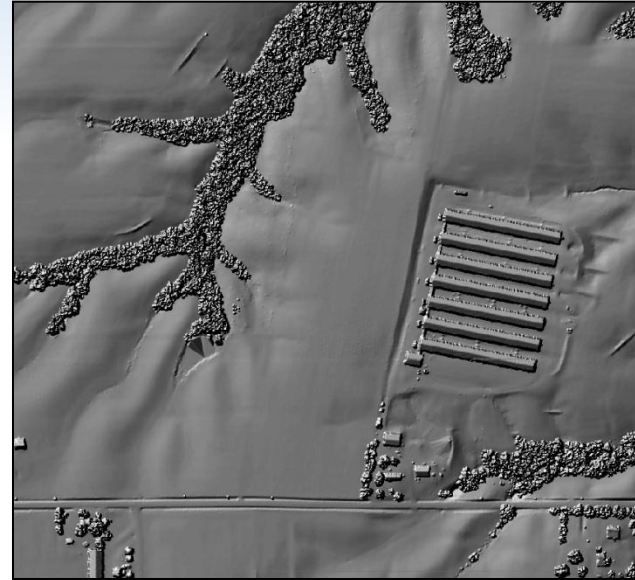
LiDAR 1 meter DEM – Shaded Relief



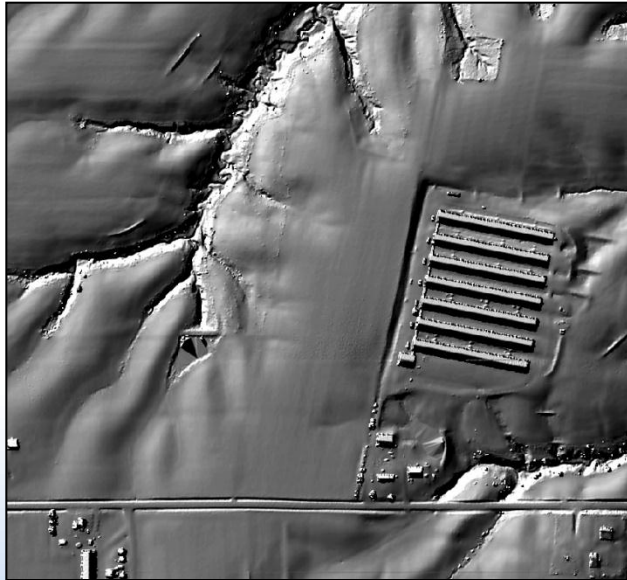
Bare Earth



First Return



Last Return

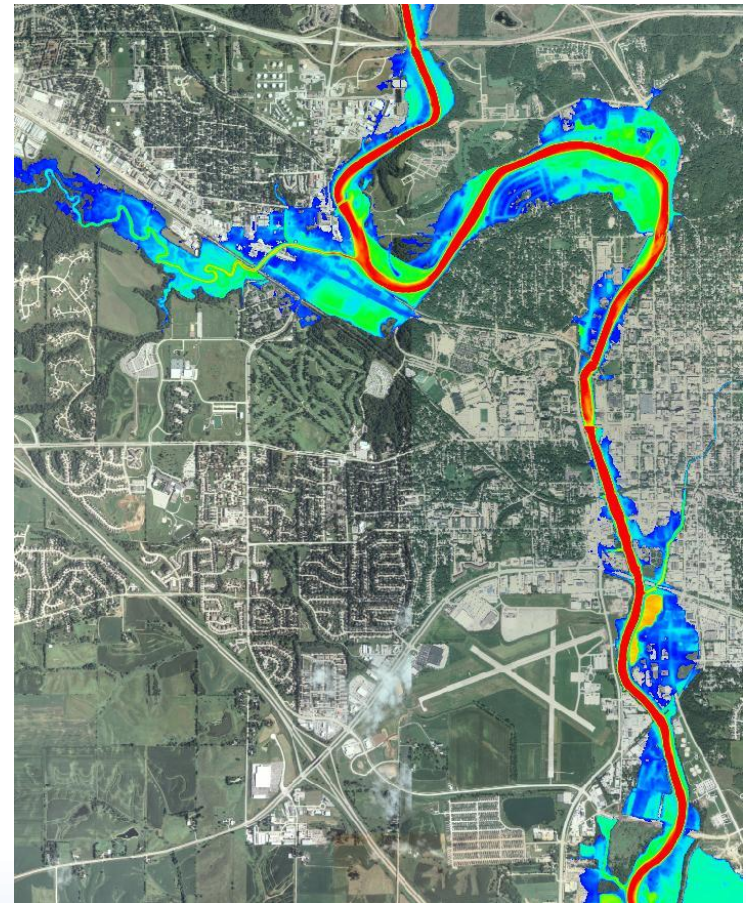


Intensity



IOWA FLOOD CENTER

- Created by State legislation following the 2008 flood
 - A technical and educational resource for Iowans
 - Coordinates closely with IDNR and other state and federal agencies operating within Iowa
- Housed at IIHR – Hydroscience & Engineering, the University of Iowa
 - 90-year history
 - Expertise in river hydraulics, hydrology, and fluid mechanics
- Activities
 - Inundation mapping
 - Flood forecasting
 - Flood frequency estimation
 - Flood monitoring
 - Training



2008 Flood in Iowa City

Risk MAP





Risk Mapping, Assessment, and Planning (Risk MAP) Multi-Year Plan: Fiscal Years 2010-2014



Risk MAP Goals

Risk MAP Measures

Goal 1: Data Gaps

Address gaps in flood hazard data

- Ensure 80 percent of the Nation's flood hazards are current by 2014 – the flood hazard data are new, have been updated, or deemed still valid through Risk MAP review and update process

Goal 2: Awareness & Understanding

Measurable increase of public awareness & understanding

- Increase State, local, and Tribal officials' level of understanding of flood risk

Goal 3: Mitigation Planning

Lead effective engagement in Mitigation Planning

- Ensure 80 percent of the U.S. population (excluding territories) is covered by a Local or Tribal hazard mitigation plan that is approved or approvable pending adoption

Goal 4: Digital Platform

Provide an enhanced digital platform

- Percent of Local hazard mitigation plans approved using quality Risk MAP data or better

Goal 5: Synergize Programs

Align Risk Analysis programs and develop synergies

- Establish a culture of continuous improvement and executing projects aimed at reducing process cycle time and improving the quality of Risk MAP products and services

Vision

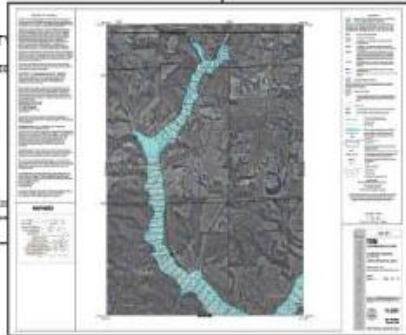
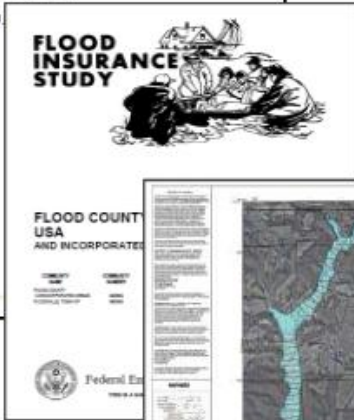
Risk MAP will deliver quality data that increases public awareness and leads to action that reduces risk to life and property

RiskMAP
Increasing Resilience Together

Traditional Regulatory Products

DFIRM Database

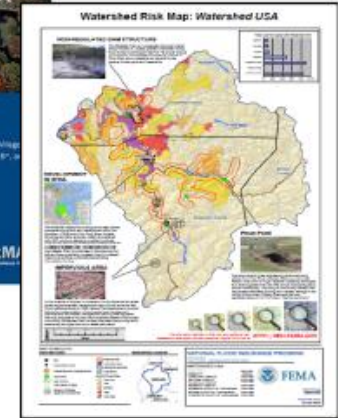
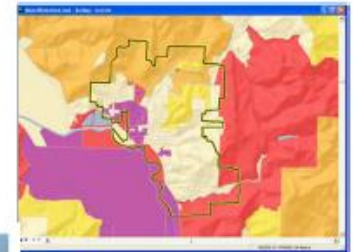
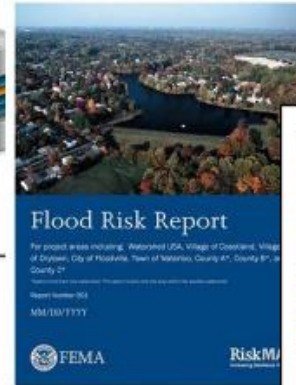
- Flood_Hazard_Data
- Political_Boundaries
- Public_Land_Survey_System
- TopoData
- Community_Panel
- L_Comm_Info
- L_MT:LOMC
- L_Pan_Revrs
- L_Pol_FHEM
- L_Riv_Model
- L_Strn_Start
- L_Wtr_Nm
- S_Bfe
- S_DOQ_Index
- S_Firm_Pan
- S_Gen_Struct
- S_Label_Ld
- S_Label_Pt
- S_LCMR
- S_Perm_Bnk
- S_Quad
- S_Riv_Mrk
- S_Transport_Ar



Non-Regulatory Products

Flood Risk Database

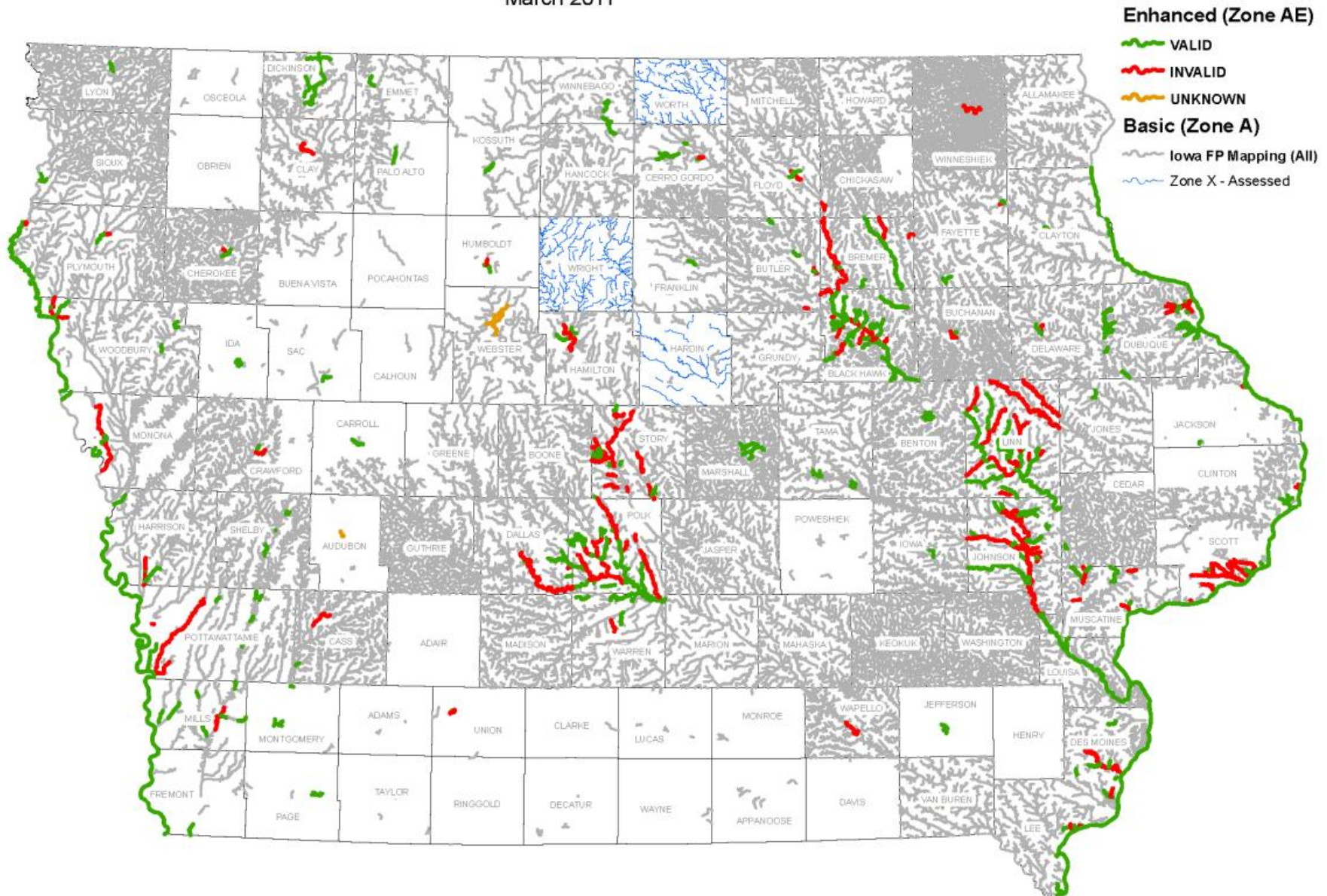
- Community_Panel_Info
- L_Comm_Info
- L_MT:LOMC
- L_Pan_Revrs
- L_Pol_FHEM
- L_Riv_Model
- L_Strn_Start
- L_Wtr_Nm
- S_Bfe
- S_DOQ_Index
- S_Firm_Pan
- S_Gen_Struct
- S_Label_Ld
- S_Label_Pt
- S_LCMR
- S_Perm_Bnk
- S_Quad
- S_Riv_Mrk
- S_Transport_Ar



CNMS Phase 3 - Data Model: State of Iowa

March 2011

Study Type and Status

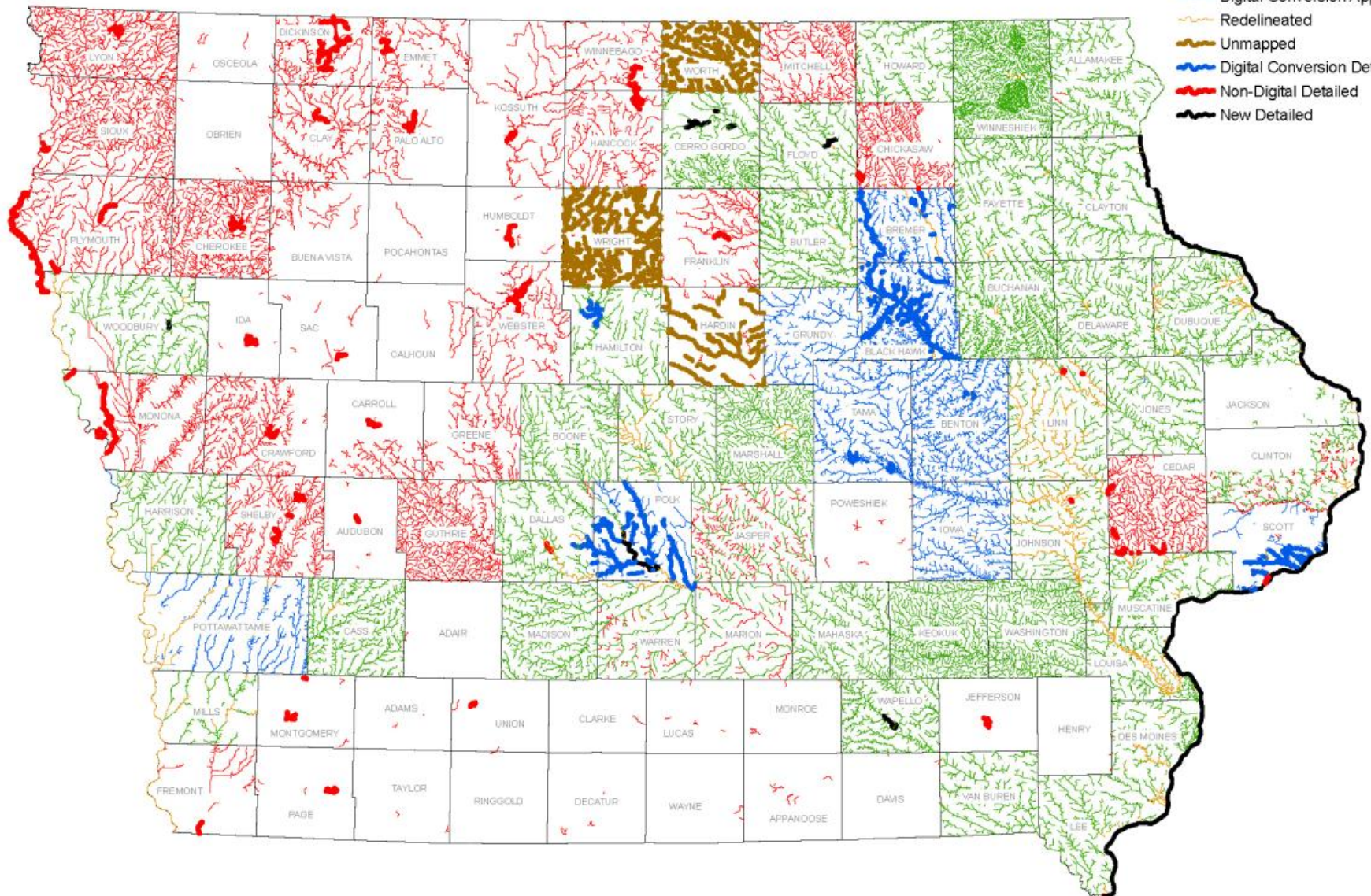


CNMS Phase 3 - Data Model: State of Iowa

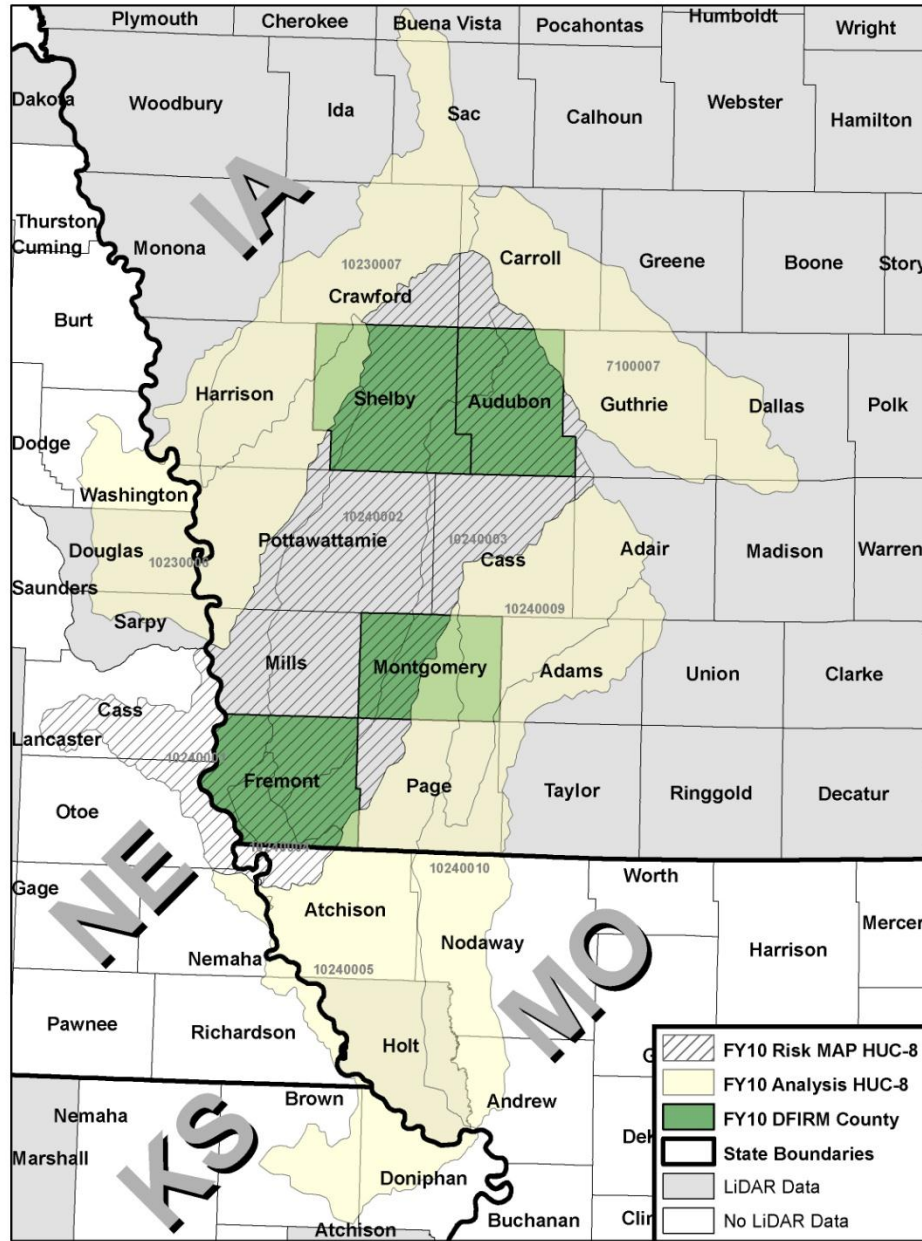
March 2011

Study Type

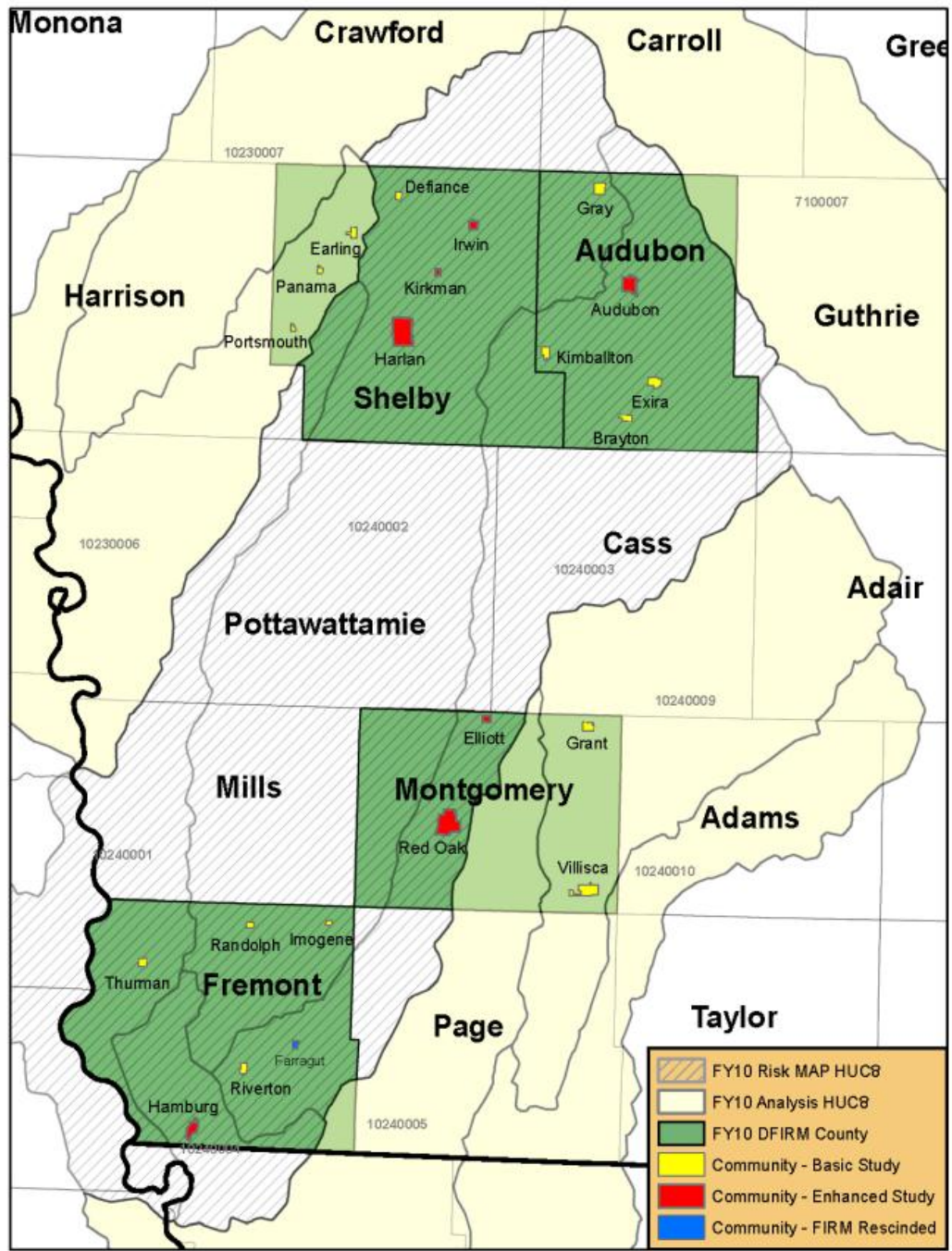
- New Approximate
- Non-Digital Approximate
- Digital Conversion Approximate
- Redelineated
- Unmapped
- Digital Conversion Detailed
- Non-Digital Detailed
- New Detailed

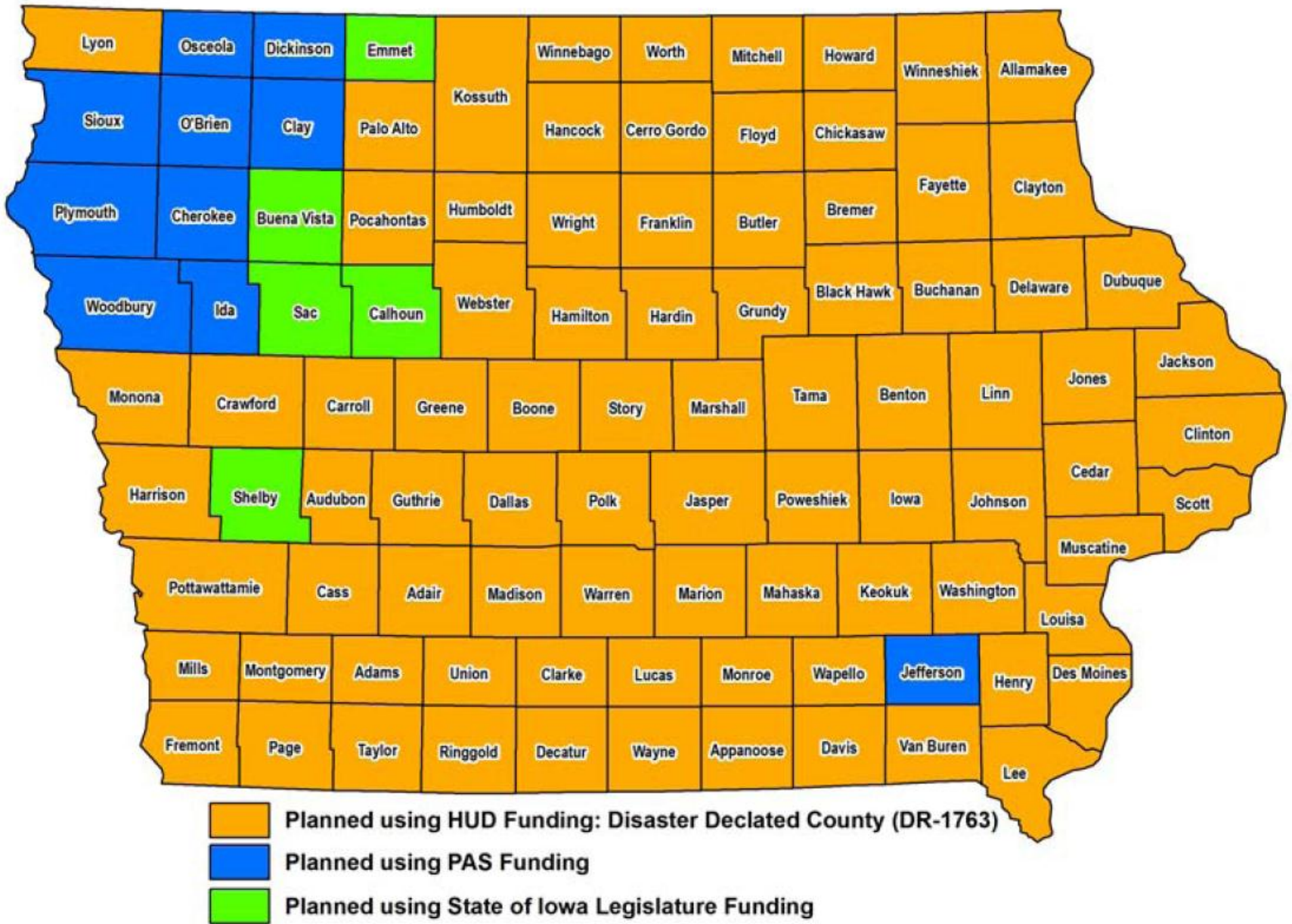


Risk MAP - FY 2010 Iowa Floodplain Mapping Project



FEMA FY 2010 - Iowa Flood Plain Mapping Project



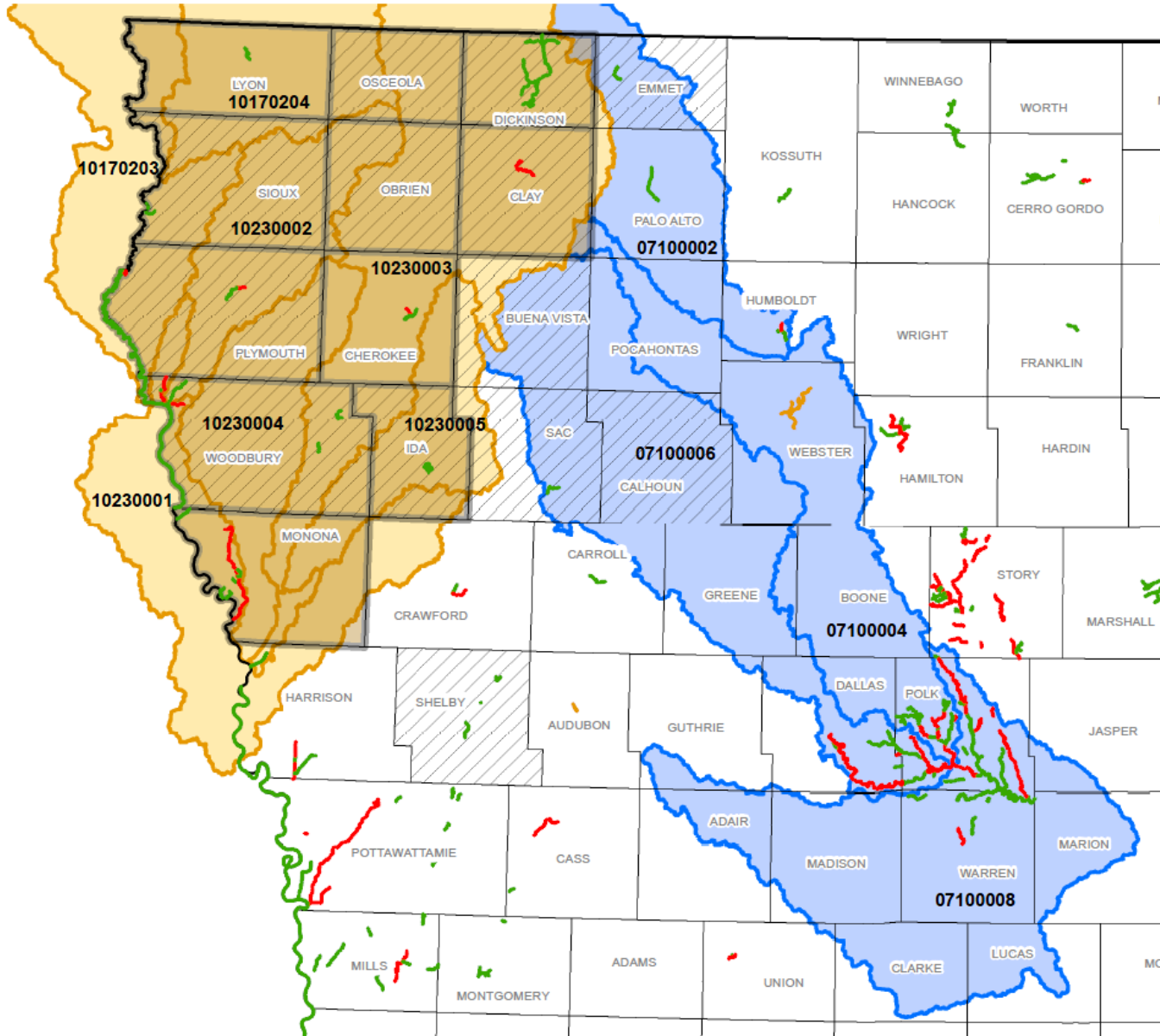


Potential Funding Eligibility by County in Iowa

APPENDIX C

Section 22 - PAS: Army Corps of Engineers & IDNR

June 2011



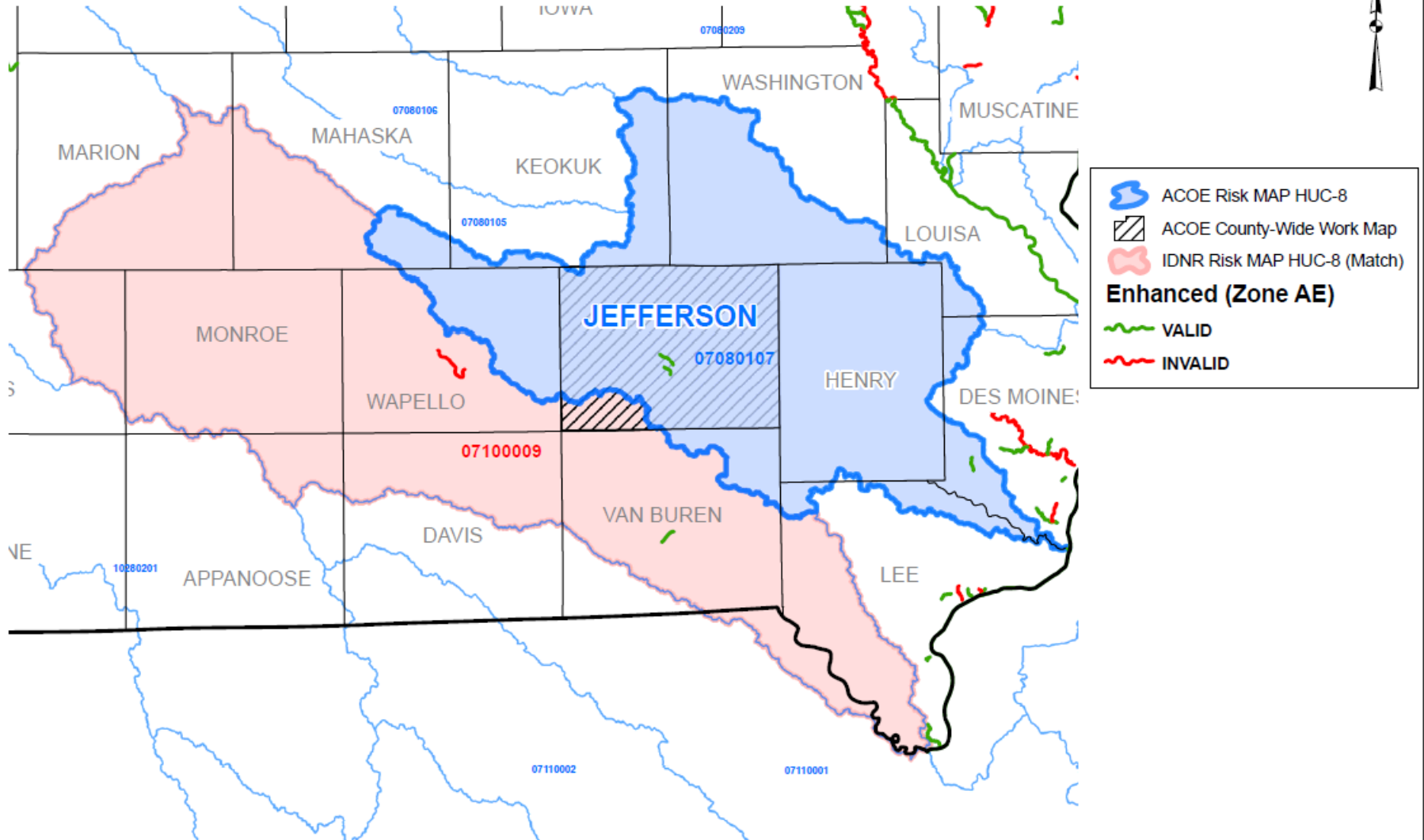
- ACOE Risk MAP Watersheds
- ACOE County-Wide Work Maps
- IDNR Risk MAP Watersheds (Match)
- Non Disaster-Declared Counties

Enhanced (Zone AE)

- VALID
- INVALID
- UNKNOWN



APPENDIX C
Section 22 - PAS: Army Corps of Engineers & IDNR
May 2012





THANK YOU

[HTTP://WWW.IOWADNR.GOV/INSIDEDNR/REGULATORYLAND/FLOODPLAINMANAGEMENT/FLOODPLAINMAPPING.ASPX](http://www.iowadnr.gov/insidednr/regulatoryland/floodplainmanagement/floodplainmapping.aspx)

<http://www.iowafloodcenter.org/maps/>

Scott Ralston

Scott.ralston@dnr.iowa.gov

515-281-8121